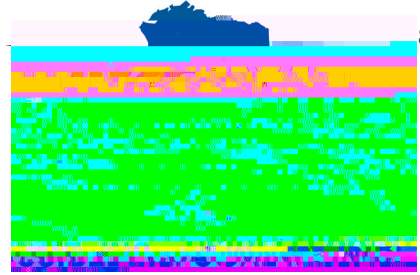


Chancellor's Report on Philanthropy



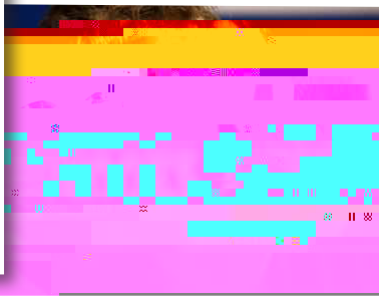
Supporting Our Future Workforce

Alaska's First University received \$165,000 from the Alaska State Bar Association in 2010. The grant was used to support the Alaska State Bar Association's efforts to provide legal education to Alaska's future workforce. The grant was used to support the Alaska State Bar Association's efforts to provide legal education to Alaska's future workforce. The grant was used to support the Alaska State Bar Association's efforts to provide legal education to Alaska's future workforce.



Former Nanook defenseman-turned Blackhawk

Alaska's First University received \$25,000 from the Alaska State Bar Association in 2010. The grant was used to support the Alaska State Bar Association's efforts to provide legal education to Alaska's future workforce. The grant was used to support the Alaska State Bar Association's efforts to provide legal education to Alaska's future workforce. The grant was used to support the Alaska State Bar Association's efforts to provide legal education to Alaska's future workforce.



2003, 2006

Congrats Mellon Fellows

Alaska's First University received \$159,000 from the Mellon Foundation in 2010. The grant was used to support the Mellon Foundation's efforts to provide legal education to Alaska's future workforce. The grant was used to support the Mellon Foundation's efforts to provide legal education to Alaska's future workforce. The grant was used to support the Mellon Foundation's efforts to provide legal education to Alaska's future workforce.



Robert Belous Global Change Research Endowment



Alaska's First University received \$11,000 from the Robert Belous Global Change Research Endowment in 2010. The grant was used to support the Robert Belous Global Change Research Endowment's efforts to provide legal education to Alaska's future workforce. The grant was used to support the Robert Belous Global Change Research Endowment's efforts to provide legal education to Alaska's future workforce. The grant was used to support the Robert Belous Global Change Research Endowment's efforts to provide legal education to Alaska's future workforce.

Alaska's First University received \$11,000 from the Robert Belous Global Change Research Endowment in 2010. The grant was used to support the Robert Belous Global Change Research Endowment's efforts to provide legal education to Alaska's future workforce. The grant was used to support the Robert Belous Global Change Research Endowment's efforts to provide legal education to Alaska's future workforce. The grant was used to support the Robert Belous Global Change Research Endowment's efforts to provide legal education to Alaska's future workforce.

A \rightarrow D \rightarrow C! \rightarrow C! \rightarrow D! \rightarrow C! \rightarrow D! \rightarrow C!
\$46,000 \rightarrow C! \rightarrow D! \rightarrow C! \rightarrow D! \rightarrow C!
D! \rightarrow C! \rightarrow D! \rightarrow C! \rightarrow D!

A \rightarrow D \rightarrow C! \rightarrow D! \rightarrow C! \rightarrow D!
D! \rightarrow C! \rightarrow D! \rightarrow C! \rightarrow D!

\$175,000 \rightarrow C! \rightarrow D! \rightarrow C! \rightarrow D!
D! \rightarrow C! \rightarrow D! \rightarrow C! \rightarrow D!

\$20,000 \rightarrow A \rightarrow E \rightarrow F \rightarrow G
\$5,000 \rightarrow A \rightarrow E \rightarrow F \rightarrow G
A \rightarrow E \rightarrow F \rightarrow G

\$92,000 \rightarrow C! \rightarrow D! \rightarrow C! \rightarrow D!
D! \rightarrow C! \rightarrow D! \rightarrow C! \rightarrow D!

\$10,000 \rightarrow A \rightarrow E \rightarrow F \rightarrow G
A \rightarrow E \rightarrow F \rightarrow G

A \rightarrow E \rightarrow F \rightarrow G

Of Note

- \rightarrow D! \rightarrow C! \rightarrow D! \rightarrow C! \rightarrow D! \rightarrow C!
A \rightarrow E \rightarrow F \rightarrow G
- \rightarrow A \rightarrow E \rightarrow F \rightarrow G
E \rightarrow F \rightarrow G \rightarrow A
L \rightarrow M \rightarrow N \rightarrow O
C 15
- \rightarrow A \rightarrow E \rightarrow F \rightarrow G
E \rightarrow F \rightarrow G \rightarrow A
L \rightarrow M \rightarrow N \rightarrow O
D \rightarrow C! \rightarrow D! \rightarrow C! \rightarrow D!
A \rightarrow E \rightarrow F \rightarrow G
C! \rightarrow D! \rightarrow C! \rightarrow D!
E \rightarrow F \rightarrow G \rightarrow A
\$190,000
F \rightarrow G \rightarrow A
\$20,000
- \rightarrow A \rightarrow E \rightarrow F \rightarrow G
E \rightarrow F \rightarrow G \rightarrow A
L \rightarrow M \rightarrow N \rightarrow O
3
A \rightarrow E \rightarrow F \rightarrow G
C! \rightarrow D! \rightarrow C! \rightarrow D!
E \rightarrow F \rightarrow G \rightarrow A
- \rightarrow A \rightarrow E \rightarrow F \rightarrow G
E \rightarrow F \rightarrow G \rightarrow A
L \rightarrow M \rightarrow N \rightarrow O
A \rightarrow E \rightarrow F \rightarrow G
A \rightarrow E \rightarrow F \rightarrow G
- \rightarrow A \rightarrow E \rightarrow F \rightarrow G
E \rightarrow F \rightarrow G \rightarrow A
L \rightarrow M \rightarrow N \rightarrow O
A \rightarrow E \rightarrow F \rightarrow G
E \rightarrow F \rightarrow G \rightarrow A
\$5
A \rightarrow E \rightarrow F \rightarrow G
A \rightarrow E \rightarrow F \rightarrow G
A \rightarrow E \rightarrow F \rightarrow G
A \rightarrow E \rightarrow F \rightarrow G
- \rightarrow A \rightarrow E \rightarrow F \rightarrow G
D \rightarrow C! \rightarrow D! \rightarrow C! \rightarrow D!
D \rightarrow C! \rightarrow D! \rightarrow C! \rightarrow D!
C! 18!
L \rightarrow M \rightarrow N \rightarrow O
A \rightarrow E \rightarrow F \rightarrow G
L \rightarrow M \rightarrow N \rightarrow O
A \rightarrow E \rightarrow F \rightarrow G
L \rightarrow M \rightarrow N \rightarrow O
A \rightarrow E \rightarrow F \rightarrow G
L \rightarrow M \rightarrow N \rightarrow O
A \rightarrow E \rightarrow F \rightarrow G
L \rightarrow M \rightarrow N \rightarrow O
A \rightarrow E \rightarrow F \rightarrow G
L \rightarrow M \rightarrow N \rightarrow O
\$3,500